

## **Notice:**

1. Disconnect all electrical powers to the DPX avoid electric shock. Follow the manual and installation procedure. The products will give you convenient and comfortable benefits.
2. DO NOT install or disassemble by self. Such as hosts, motors, covers and etc... All electrical connections must be performed by a licensed electrician.
3. Operation manual: The product has been tested by a severe inspection. It will not affect any problems in regular operation.
4. The product contents wires, circuit board, motors and etc... DO NOT put these close to water and dampness places or put the hosts in engine base.
5. To be sure the product's wires, hosts and motors have fixed and stable on a place avoid any extra noise or reduce its lifetime.
6. DO NOT put the product close to high heat place. The product has been tested by a severe inspection so it will be operated well on normal temperature (21 ~33 ).
7. Power: The manual has indicated install location, positive pole and negative pole. The installer should make sure each step of installation and indication. Otherwise, please contact with electricians or our company for further information.
8. Wires: The wires have to follow regular configure route avoid cutting or any damage.
9. Proper electrical supply: The power supply should be DC12V. DO NOT connect with any higher than DC12V power supply.
10. The product is used RF telecommunication technique. The transmission will not influence of any problems.
11. High pressure on the product will cause damage. Fitter should take easy to install the product.
12. Remote Controller: No waterproof; should avoid any water or liquid spray on the products. Disconnect the power to remote controller if keep it long time no use. DO NOT expose it directly to the sun.
13. The product only needs minim power. It is very safety.
14. It is normal the noise comes from motor when it is turning.
15. Keep the manual and guarantee and bring them to service desk when it needs to repair.

## **Table of Contents:**

Packing List-----	1
Panel Board-----	2
Installation Procedures-----	3
Operation Manual-----	5
Technical Suggestions-----	6
Others-----	7

Welcome to Have Series Product of DAIYAMA.  
You Can Control “Motion” and “Motionless” at Will.

**Motor Parts**



Remove Control x



Remove Control  
Charger x 1



Motor x 4



Host x 2

**Wires**



Connection  
Cable x 4



Power Supply  
Wire x 2

**Accessories**



Bolt x 2



Joint-Nut x



Motor Cover x 4



Bracket Seat x



Motor Bracket x 4



Screw x



Sponge Sticker X



Zoster x 8

**Documents: Manual x 1 Guarantee x 1**

## P2

### 1. Storage Modules (1 to 8 Buttons):

The buttons 1 to 8 are storage modules. You can set up a road condition in a module. Switch to operation mode just click one of eight buttons and then you can easy and immediately to change different road condition of damping force.

### 2. The Button of “Set”:

”Set” button is able to switch from operation mode to setting mode that interface will appears “M-” which means you could set different damping levels and store it in any one of eight storage modules.

The Button of “Lock”: Lock all buttons on that panel board.

The Button of “ESC”: The button on operation mode is a lighting (LED) function. Switch to setting mode the function is able to reset the level to first level.

### 3. Setting Mode:

The Button of “F” or “R”: Set front two shocks or rear two shocks’ damping level.

The Buttons of “FL” (Front Left), “FR” (Front Right), “RL” (Rear Left) and “RR” (Rear Right) are setting each shock absorber individually.

### 4. The Button of “Enter”: (On Setting Mode)

The function is able to allow to change damping level(s) and store the setting condition.

The Button of “ ”: Raise damping hardness.

The Button of “ ”: Reduce damping hardness.

### 5. Power Input:

Remote controller power supply is used DC12 V.

## Interface indications

#### (A) 4 Circles:

On operation mode the 4 circles will be flashing continually.

A pair or individually is flashing continually which mean is on setting mode.

#### (B) Signal:

The interface shows all indications which means it is working regularly.

The interface shows nothing which means it is not working and needs to repair.

#### (C) Channel Display:

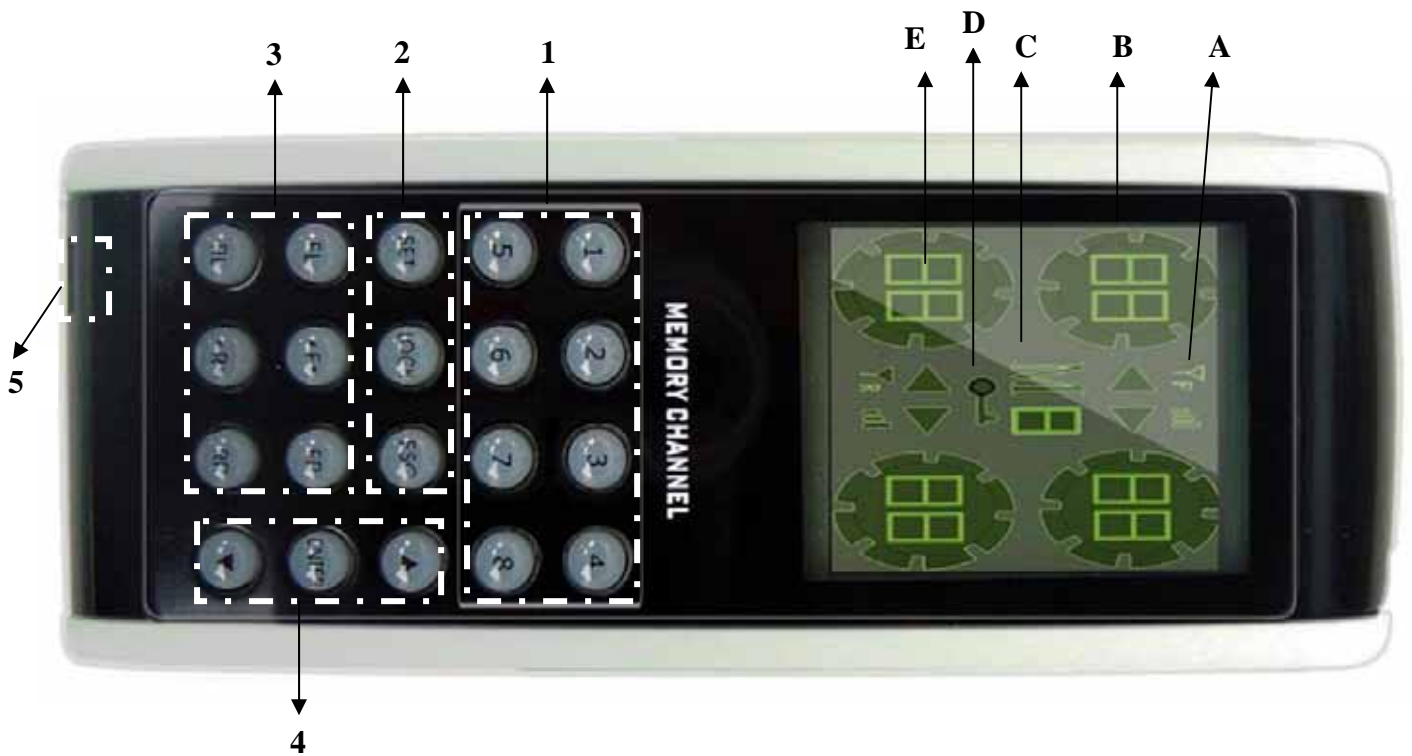
”M1” to “M8” are storage modules indications. “M-“is indication of setting mode or temporary storage.

#### (D) Lock Indication:

Disappear which mean is unlocked. Indication shows which mean is locked.

#### (E) Damping Level Digitals:

The digitals in each flash circle are indicated damping level. The levels are from 01~32.




---

### P3. Installation Procedures

To be sure the top of piston rod still has 2 to 3 threaded for the joint-nut.

#### Motor Installation

Remove damping adjuster from piston rod.



Use a clamp catch the “damping adjuster” and turn withershins. It should be easy to take it off.

#### Step1. Bolt

Install “bolt” and screw “bolt” on top of piston rod. (Turn Clockwise)

#### Step2. Joint-Nut (Face Down)

Clockwise; Screw “joint-nut” on the top thread of piston rod.

#### Step3. Bracket Seat

Clockwise; Screw “bracket seat” with the joint-nut. DO NOT screw it tie with “joint-nut”.

#### Step4. Motor Bracket (Face Up)

Clockwise; Screw “the bracket” with the “joint-nut”. DO NOT screw it tie with “joint-nut”.

#### Step5. Motor

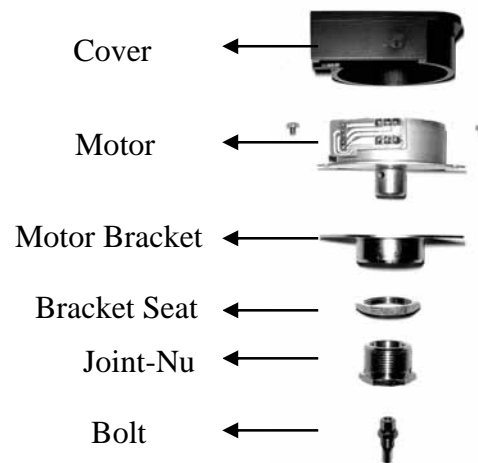
Put “the motor” on “motor bracket seat” and insert motor shaft into “bolt”. Make sure motor shaft and bolt are inserted each other.

#### Step6. Stable Motor Bracket

First of all, remove “motor” from “motor bracket” avoiding damage and then (Counterclockwise) screw “bracket seat” with motor bracket. Be sure they are tied.

#### Step7. Stable Motor

Put “motor” on “motor bracket” and then screw the screws. Each DPX package has 2 more screws for backup.



---

#### P4.

To be sure the power source. Otherwise, contact with a licensed electrician.  
All Power to the DPX items should be turn off.

#### Wire Connections

##### 1. Host and Motor Connection

Follow indication label on the host. A host supposes connect with two motors (Front Motors or Rear Motors). Connect the power to the car battery. DO NOT series or parallel with other items.

Note: Red line is positive pole (+); Black line is negative pole (-).

##### 2. Direction

Read carefully the indication labels on two hosts.

Note: FL (Front Left Coil-over), FR (Front Right Coil-over),

RL (Rear Left Coil-cover) and RR (Rear Right Coil-over)

##### 3. Make Sure the Power is Connected

The power is connected correctly the host power (LED) will be light on.

##### 4. Arrange Wires

Follow a comfortable wire routes and fix these wires. Do not put hosts in the car engine base or any damage possibility places. Be nice put it in the car and a comfortable place.

## 5. Motor Cover

Put the cover on the motor avoiding any short-circuit or damage.

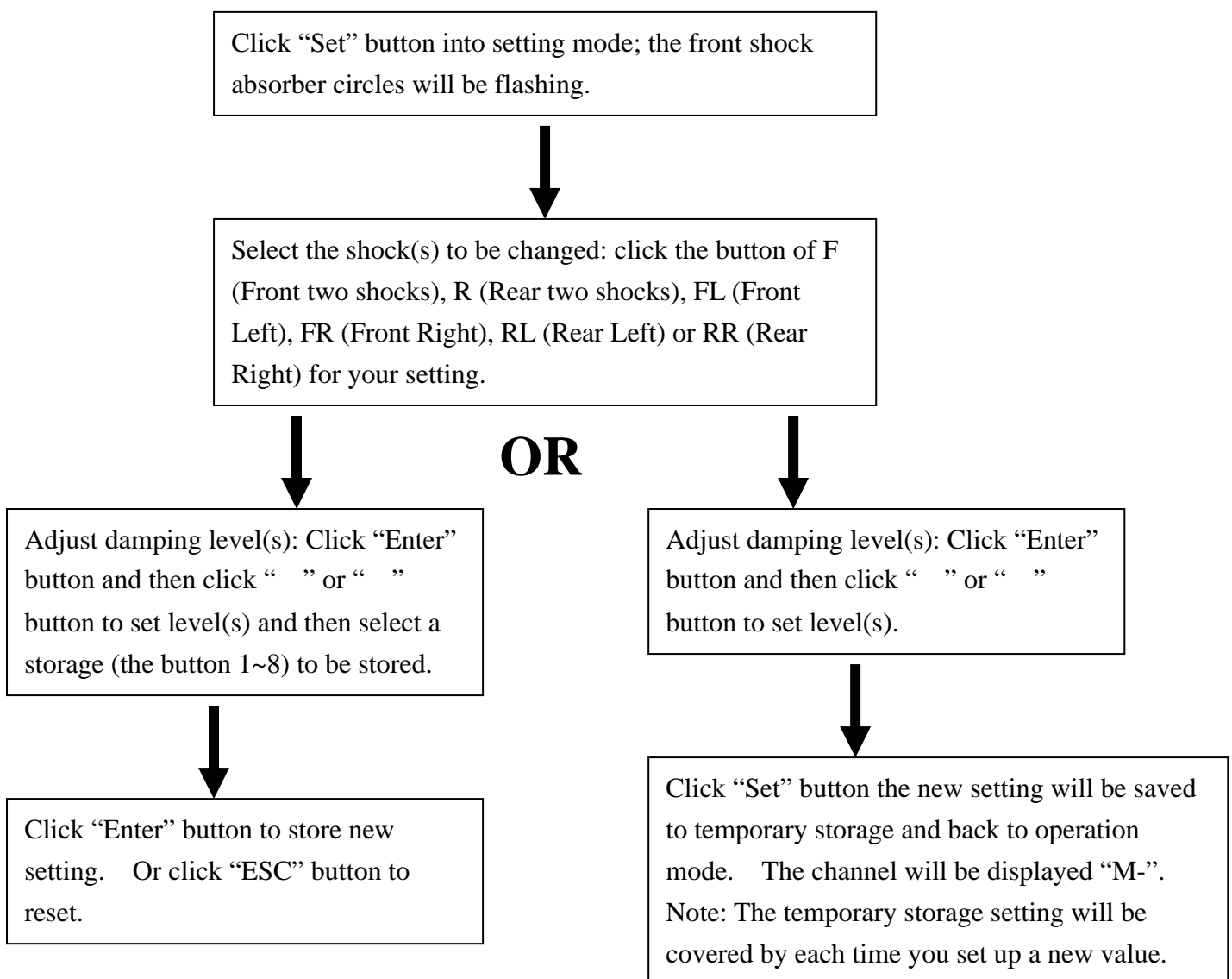
---

## P5. Operation Manual

Start remote control, the interface will shows operation mode and locked all buttons.

Click “Lock” button to cancel the function to operate that interface.

### How to set up damping levels?



**P6. Suggestion**

Try to set up a value and listen to the small noise from motors to make sure whether motors are turning. Check the hosts' indication light if motors are not turning.

Set up different levels for each shock absorber and listen to the noise from each motor. Check the wires if there is a motor not working. Some times the wires might not connect correctly.

The conception of adjusting:

Try to feel each level of damping force (from 01~32) while drive. As you can feel level 01 is softest and level 32 is hardest. Set up satisfy street racing value on each shock absorber and store these values in a storage. After that you could set up comfortable values for your family and store these values in another storage.

You could set up 8 kinds of condition for your convenience.